

ALL STERNE VON ATHEN (ALL STARS OF ATHENS)

Music: Kristina Bach
www.amazon.com/gp/product/B001EWX0Z0/ref=dm_ws_sp_ps_dp
Cd Best of Track # 11 Time 3:20 Shortened from 2:20,2 to 3:04,1
To Time 2:48 Available from choreographer

Rhythm: Two Step Phase: III

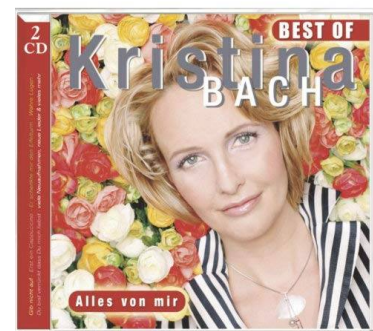
Footwork: Opposite except where (Noted)

Release Date: Nov 2019

Choreo: Jos Dierickx Beverlosestwg 14b2 3583 Paal Belgium

E-mail: jos.dierickx@telenet.be

Sequence: INTRO AB BRIDGE A B(17-32) B(25-31) END



INTRO

01-04 CP LOD LEAD FOOT FREE WAIT 2 MEASURES ; ; TWO FORWARD TWO's ; ;

{Wait} In CP LOD Id ft free wt 2 meas ; ; {2 Fwd Two's} Blend to SCP fwd L, cl R, fwd L, -; Fwd R, cl L, fwd R, -;

05-08 2 TURNING TWO's ; ; TWIRL/VINE 2 ; WALK & FACE to BFLY ;

{2 Trng Two's} Sd L stg RF trn, cl R, bk L compg 1/2 RF trn, -; Sd R contg RF trn, cl L, fwd R contg RF trn to BFLY WALL, -; {Twirl/Vine 2} [SS] Raisg jnd Id hnds Fwd L, -, fwd R (W twrl RF undr jnd hnds R, -, L) to SCP WALL, -; {Walk & Fc to BFLY} [SS] Fwd L, -, fwd R trng 1/4 RF to BFLY WALL, -;

09-10 APART & POINT to PARTNER ; TOGETHER & TOUCH ;

{Apt & Pt to Ptr} [SS] Apt L, -, pt R twd ptr, -; {Together & Tch} [SS] Tog R to SCP LOD, -, tch L to CP WALL, -;

PART A

01-04 TRAVELING BOX/W ONE TWIRL ; ; ; ;

{Traveling Box / W 1 Twirl} Sd L, cl R, fwd L raisg Id hnds, -; [SS] Sd R, -, thru L to loose RSCP RLOD (W twrl LF undr jnd Id hnds L, -, R), -; Trng to fc sd R, cl L, bk R, -; [SS] Sd L, -, thru R trng RF to CP WALL, -;

05-08 SIDE CLOSE SIDE/FLAIR ; BEHIND SIDE THRU to PICK UP ; PROGRESSIVE SCISSORS SCAR & BJO Checkg ; ;

{Sd Cl Sd/Flair} [QQQ&] Sd L, cl R, sd L, flair CW w/ R (W flair CCW w/ L); {Behind Sd Thru to Pickg Up} XRib, sd L, small thru R trng LF (W XLib, sd R, thru L trng LF to fold ifo M) to LOD, -; {Progressive Scissors SCAR & BJO Checkg} Sd L, cl R, XLif to SCAR DLW, -; Trng to fc ptr sd R, cl L, XRif to BJO DLC, -;

09-12 FISHTAIL ; WALK 2 to OP LOD ; OP BACK BOX to FACE ; ;

{Fishtail} [QQQQ] XLib, sd R, sd & fwd L, lk Rib; {Walk 2 to OP LOD} [SS] Fwd L, -, fwd R (W bk R, -, bk L trng RF) to OP LOD, -; {OP Bk Box to Fc} Sd L, cl R, bk L, -; Sd R, cl L, fwd R trng RF (W LF) to CP WALL, -;

13-16 TWO TURNING TWO's ; ; TWIRL/VINE 2 ; WALK & FACE to BFLY ;

{2 Trng Two's} Repeat meas 5,6 Intro ; ; {Twirl/Vine 2} Repeat meas 7 Intro ; {Walk & Fc to BFLY} Repeat meas 8 Intro ;

17-20 LACE UP to OP LOD ; ; ; ;

{Lace Up to OP LOD} [w/ Id hnds tvlg twd DLW bhd & arnd W] Fwd L, cl R, fwd L (W travels twd DLC undr jnd Id hnds), -; In LOP LOD fwd R, cl L, fwd R, -; [relg Id hnds & jng trl hnds & trvlg twd DLC bhd & arnd W] Fwd L, cl R, fwd L (W travels twd DLW undr jnd trl hnds) to OP LOD, -; Fwd R, cl L, fwd R to OP LOD, -;

21-24 DIAGONAL VINE 3 APART & TOGETHER to BFLY ; ; BFLY BOX ; ;

{Diag Vine 3 Apt & Tog to BFLY} [Travg diag DLC (W DLW)] Sd L, XRib (W XLib), sd L, -; [Travg diag DLW (W DLC)] Sd R, XLib (W XRib), sd R trng RF to BFLY WALL, -; {BFLY Box} In Bfly Sd L, cl R, fwd L, -; Sd R, cl L, bk R, -;

PART B

01-04 FACE to FACE & BACK to BACK TWICE ; ; ; ;

{Fc to Fc & Bk to Bk x 2} Sd L, cl R, sd L trn LF 1/2 to BK-TO-BK, -; Sd R, cl L, sd R trng RF 3/8 to BFLY, -; Repeat meas 1,2 Part B ; ;

Page 2: Alle Sterne Von Athen

05-08 BASKETBALL TURN ; ; SLOW OP VINE 4 ; ;

{Basketball Trn} [SS;SS] Relg hnds fwd L w/ lun action trng ¼ RF, -, rec R trng ¼ RF to R-SD-BY-SD RLOD, -;
Fwd L w/ lun action trng ¼ RF, -, rec R trng ½ RF to CP WALL, -; {Slow OP Vine 4} [SS;SS] [Relsg trl hnds]
Sd L, -, XRib (*WXLib*) to LOP RLOD, -; Trng to fc Sd & fwd L, -, XRif (*WXLif*) to CP WALL, -;

09-12 STROLLING VINE ; ; ; ;

{Strolling Vine} [SS] Sd L, -, XRib (*WXLif*), -; Sd L, cl R, sd L trng ½ LF to COH, -; [SS] Sd R, -, XLib (*WXRif*), -; Sd
R, -, cl L, sd R trng ½ RF to CP WALL, -;

13-16 TWO TURNING TWO'S ; ; TWIRL/VINE 2 ; WALK & FACE to BFLY ;

{2 Trng Two's} Repeat meas 5,6 Intro ; ; {Twirl/Vine 2} Repeat meas 7 Intro ; {Walk & Fc to BFLY} Repeat
meas 8 Intro ;

17-20 TRAVELING DOORS BOTH WAY'S ; ; ; ;

{Traveling Doors Both Way's} [SS] Rk sd L, -, rec R, -; XLif (*WXRif*), sd R, XLif (*WXRif*), -; [SS] Rk sd R, -, rec L, -;
XRif (*WXLif*), sd L, XRif (*WXLif*) to BFLY, -;

21-24 VINE 2 & FACE to FACE ; ; VINE 2 & BACK to BACK ; ;

{Vine 2 Fc to Fc} [SS] Sd L, -, XRib (*WXLib*), -; Sd L, cl R, trng 3/8 LF, sd & fwd L to almost BK-TO-BK, -; {Vine 2
Bk to Bk} [SS] Sd R, -, XLib (*XRib*), -; Sd R, cl L, trng 3/8 RF sd & fwd R to CP WALL, -;

25-28 HALF A BOX ; SCISSOR THRU ; CIRCLE BOX ; ;

{Half a Box} Sd L, cl R, fwd L, -; {Scissor Thru} Sd R, cl L, XRif (*WXif*) to SCP LOD, -; {Circle Box} [Raisg ld hnds]
Sd L, cl R, fwd L, -; Sd R, cl L, bk R (*WRF trn under jnd ld hnds fwd R, L, R, -; L, R, L*) to CP WALL, -;

29-32 TWO FORWARD TWO'S ; ; TWIRL/VINE 2 ; WALK & FACE to BFLY [3th TIME to CP] ;

{2 Fwd Two's} Repeat meas 3,4 Intro ; ; {Twirl/Vine 2} Repeat meas 7 Intro ; {Walk & Fc to BFLY} Repeat
meas 8 Intro {3th Time: to CP} ;

BRIDGE

01-02 APART & POINT to PARTNER ; TOGETHER & TOUCH ;

{Apt & Pt to Ptr} Repeat meas 9 Intro ; {Together & Tch} Repeat meas 10 Intro ;

ENDING

01 APART POINT to PARTNER ;

{Apt & Pt to Ptr} Repeat meas 9 Intro ;